

· 1272 ·

FISHMONGERS

*Hall*

[www.FishmongersHall.org.uk](http://www.FishmongersHall.org.uk)

Introduction

Our Rooms

Food & Drink

Services & Facilities

Enquiries

*Nearest station* Monument Underground

*Nearest Airport* City Airport

*Bus Routes* : [Click Here](#)

*On-Site Parking* Yes

*Off-Site Parking* [Click Here](#)



# Meetings & Events at Fishmongers Hall

A City of London landmark, Fishmongers' Hall has been a catalyst for connection, change and impact for 750 years.

Today, our beautifully restored riverside spaces offer the ideal setting for thoughtful planning, meaningful conversation, and memorable occasions.

Just moments from London Bridge, we combine historical significance with modern functionality—making our venue well-suited to everything from strategic offsites to elegant private dinners.

## FEATURES

Prime City of London location

River Thames frontage

Flexible spaces for 8–450 guests

In-house catering by expert chefs

AV throughout

Discreet and experienced events team

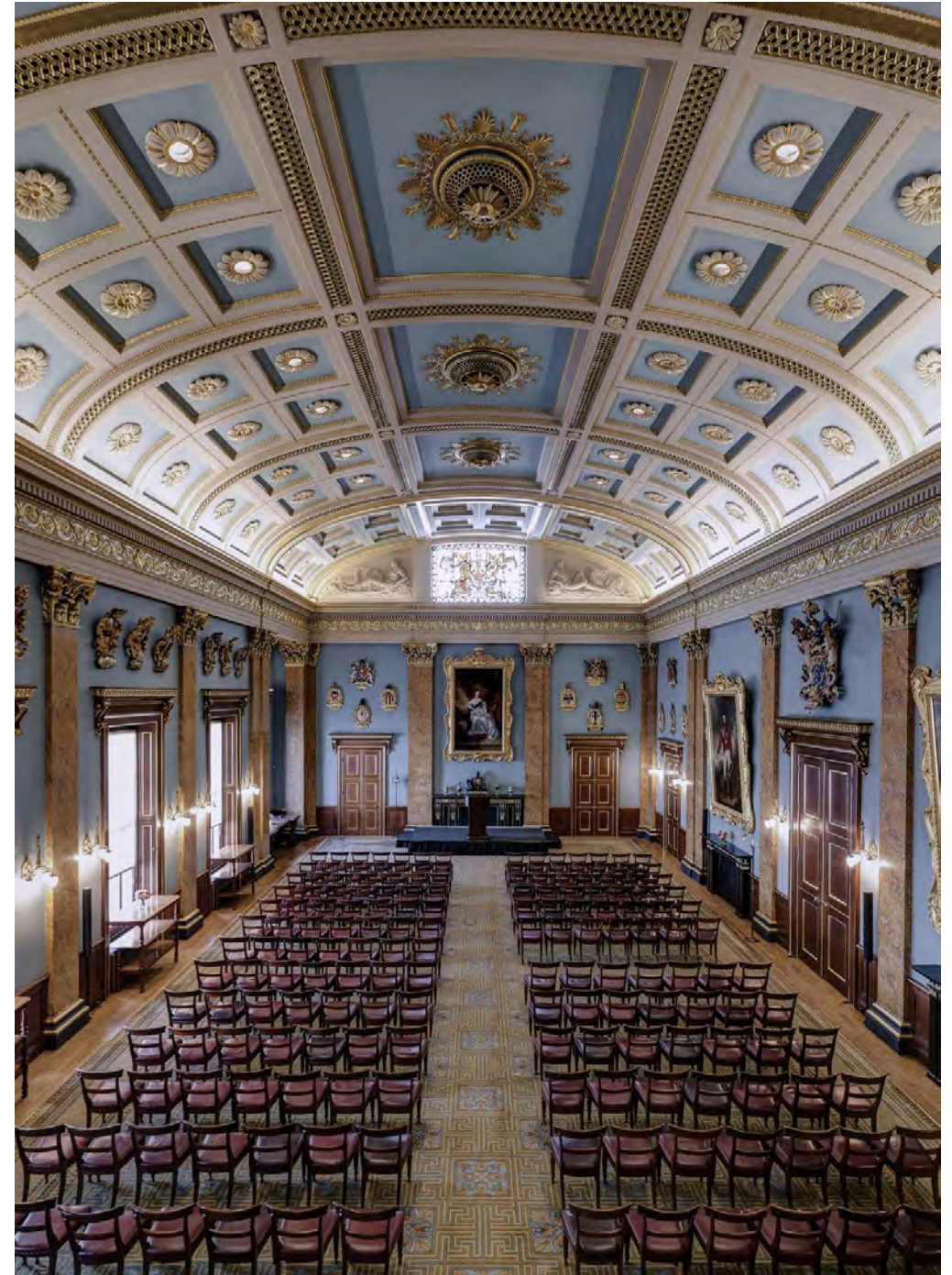


# The Banqueting Hall

Set at the heart of Fishmongers' Hall and accessed through the grand staircase our most impressive room offers a dramatic, historic setting for conferences, lunches dinners & presentations in a central City of London location.

**Capacities:** 350 (reception) | 190 (dining) | 250 (theatre) | 176 (round tables) | 84 (classroom)

**Features:** State of the art AV suite, lift access, high ceiling and windows offering natural light. Hearing Loop & Fully accessible.



View room details

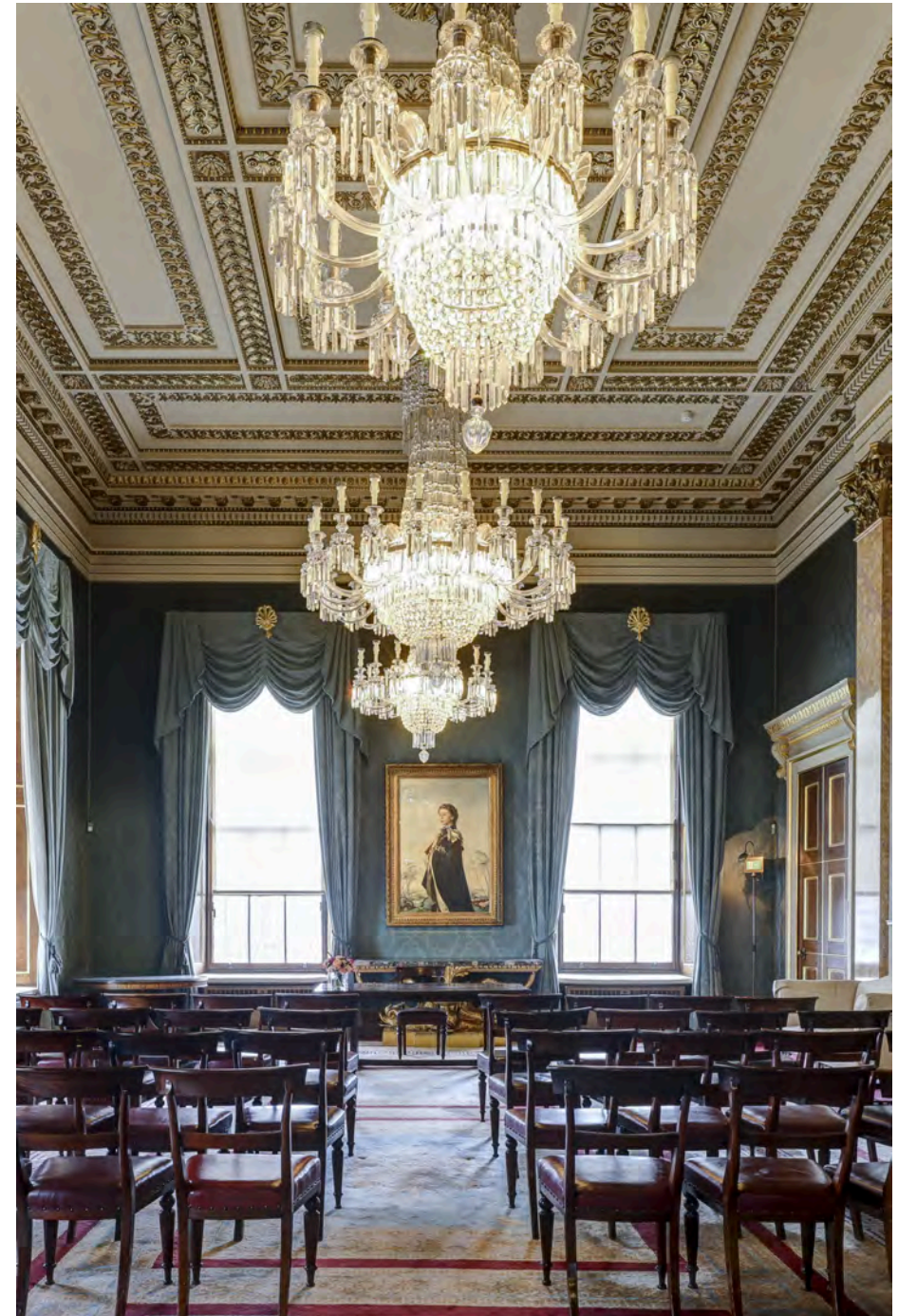


## The Court Drawing Room

A refined dining space adjoining the Court Dining Room, perfect for hosted lunches or private dinners.

**Capacities:** 24 seated | 60 standing | 56 theatre

**Features:** An intimate room with original candlelit chandeliers adding to the atmosphere, dual aspect window with London Bridge view, iconic artwork.



View room details



# The Court Dining Room

An elegant riverside room for drinks, breakouts, or private events. Interconnected with the Court Drawing Room should you require more space.

**Capacities** 40 -75 theatre | 77 round table reception | 32 - 63 dining

**Features:** A bright, flexible space, floor to ceiling windows offer a unique view of London Bridge, the River Thames & the Shard.



View room details



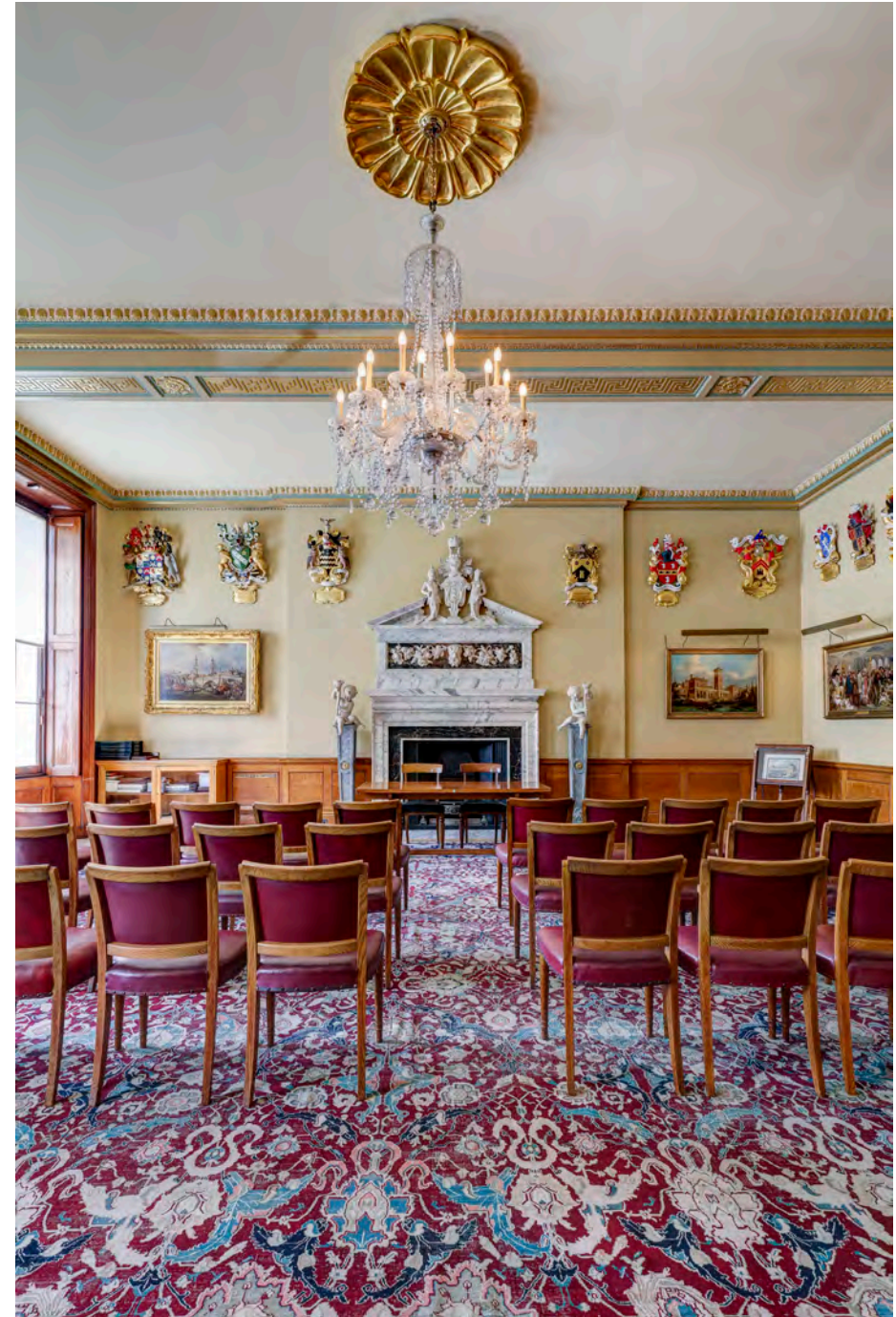
## The Court Room & Terrace

A characterful room with access to our terrace overlooking Fishmongers Wharf, London Bridge & the River Thames - a historic view enjoyed for centuries by guests. The room lends itself to meetings, presentations & more social events when combined with the terrace.

**Capacities:** 100 standing | 35-50 seated meetings

**Features:** River views, outdoor access, flexible layout, AV adaptable

\*some access restrictions in this space. Please speak to Events Team directly



View room details



# The Gold Room

A private room ideal for lunches or board meetings.

**Capacities:** Capacity 12 boardroom layout, 11 people with a screen.

**Features:** Silverware, heritage artworks, optional AV



View room details

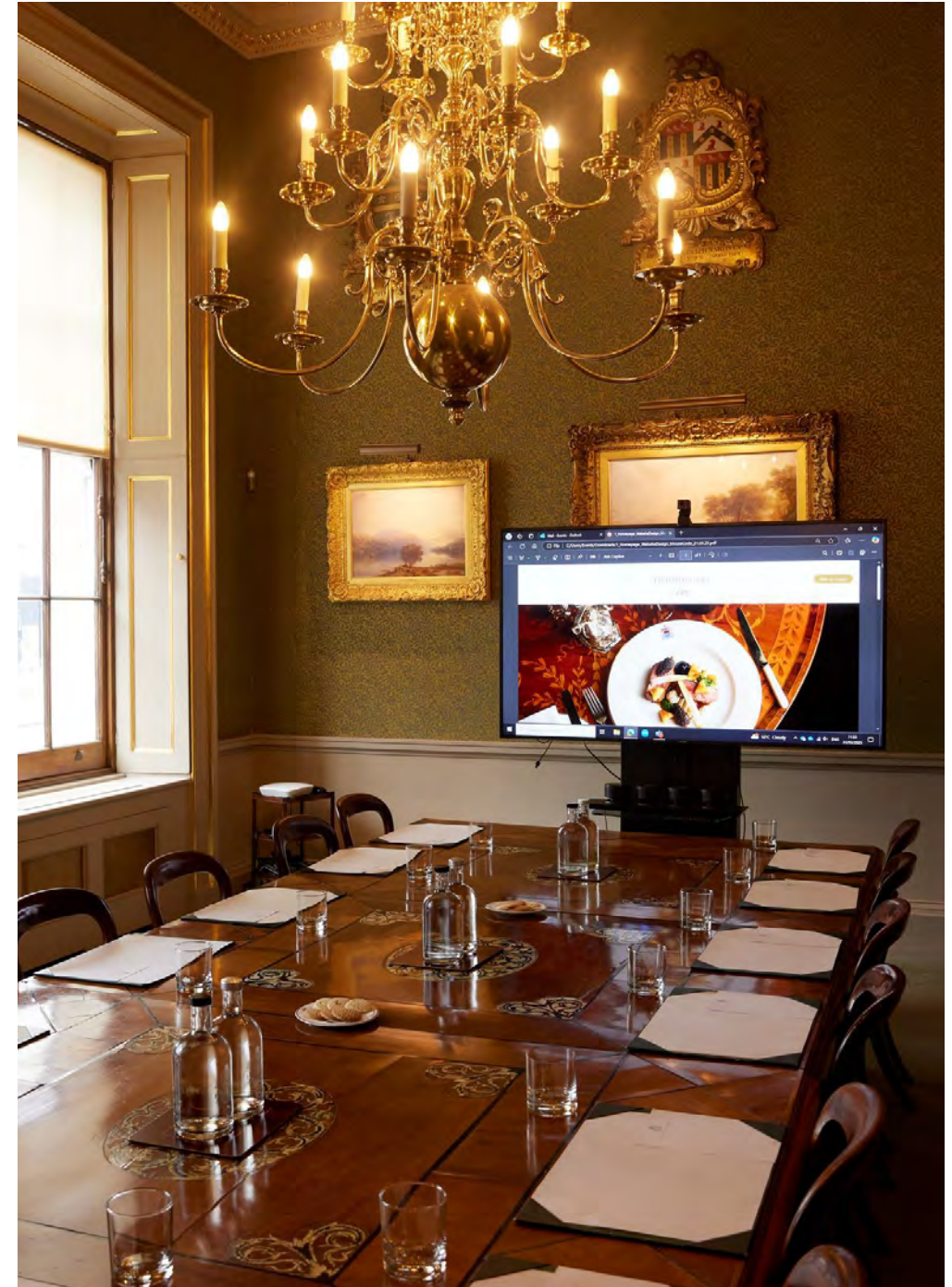


# The Committee Room

A working space with full AV and video conferencing.

**Capacities:** 14 boardroom layout, 13 people with a screen.

**Features:** Fully air-conditioned, catered meetings, tech-ready, high ceiling and windows offering natural light.



View room details



# The Library

An intimate, culturally rich room perfect for private discussions  
**Capacities:** 8 seated

**Features:** Quiet, AV on request, characterful setting



View room details

## Services & Facilities

The historic rooms at Fishmongers' Hall come equipped with the essentials for a successful event—plus optional enhancements as needed. From AV support to all-day service, we ensure everything runs smoothly behind the scenes.

### What's Included:

Free high-speed Wi-Fi throughout

AV screens and projectors (portable)

PA system and microphones (on request)

Video conferencing available

Flip charts, lecterns, and meeting materials

Secure cloakroom and staffed reception

On-site fully trained security



## Food & Drink

Dining at Fishmongers' Hall is led by our in-house chefs—an experienced team known for precision, consistency, and beautifully presented food. Every dish is prepared on-site and they take great pride in serving seasonal specialities sourced from London's finest suppliers. Whether you need a light working lunch, a canapé reception, or a multi-course dinner, our team will tailor the experience to your event.

### Menu Options Include:

Working breakfasts

Brasserie-style plated lunches

Healthy bowl food and sharing platters

Formal banquets and wine pairings

Vegan, vegetarian, and allergen-aware options



# Enquiries

Our in-house team are here to help you find the right space and format for your event. Whether you're in the early stages of planning or ready to confirm your date, they will guide you through every detail to create a memorable experience.

**email:** [VenueHire@FishmongersHall.org.uk](mailto:VenueHire@FishmongersHall.org.uk)

**phone:** +44(0)207 626 3531

Fishmongers' Hall

London Bridge

London

EC4R 9EL





· 1272 ·

# FISHMONGERS

*Hall*

We look forward to hearing from you soon. Please send all enquiries to

[VenueHire@FishmongersHall.org.uk](mailto:VenueHire@FishmongersHall.org.uk)

[www.FishmongersHall.org.uk](http://www.FishmongersHall.org.uk)